



# Title Plan - LT 594022

---

**Survey Number** LT 594022  
**Surveyor Reference** P21-400 Arran Hill Precinct 6 Stage 2  
**Surveyor** Samantha Kate Muirhead  
**Survey Firm** Wood & Partners Consultants Ltd  
**Surveyor Declaration**

---

## Survey Details

**Dataset Description** Lots 72 to 75, 77 to 85, 102 to 123, 902 and 9000 Being a Subdivision of Lot 9000 DP 580129  
**Status** Initiated  
**Land District** North Auckland  
**Submitted Date**  
**Survey Class** Class A  
**Survey Approval Date**  
**Deposit Date**

---

## Territorial Authorities

Auckland Council

---

## Comprised In

RT 1079459

---

## Created Parcels

Parcels	Parcel Intent	Area	RT Reference
Lot 902 Deposited Plan 594022	Vesting on Deposit for Road	0.8525 Ha	
Lot 77 Deposited Plan 594022	Fee Simple Title	0.0653 Ha	1147728
Lot 78 Deposited Plan 594022	Fee Simple Title	0.0530 Ha	1147729
Lot 79 Deposited Plan 594022	Fee Simple Title	0.0530 Ha	1147730
Lot 80 Deposited Plan 594022	Fee Simple Title	0.0530 Ha	1147731
Lot 81 Deposited Plan 594022	Fee Simple Title	0.0531 Ha	1147732
Lot 82 Deposited Plan 594022	Fee Simple Title	0.0530 Ha	1147733
Lot 83 Deposited Plan 594022	Fee Simple Title	0.0530 Ha	1147734
Lot 84 Deposited Plan 594022	Fee Simple Title	0.0532 Ha	1147735
Lot 85 Deposited Plan 594022	Fee Simple Title	0.0654 Ha	1147736
Lot 102 Deposited Plan 594022	Fee Simple Title	0.0663 Ha	1147737
Lot 103 Deposited Plan 594022	Fee Simple Title	0.0525 Ha	1147738
Lot 104 Deposited Plan 594022	Fee Simple Title	0.0524 Ha	1147739
Lot 105 Deposited Plan 594022	Fee Simple Title	0.0525 Ha	1147740
Lot 106 Deposited Plan 594022	Fee Simple Title	0.0526 Ha	1147741
Lot 107 Deposited Plan 594022	Fee Simple Title	0.0525 Ha	1147742
Lot 108 Deposited Plan 594022	Fee Simple Title	0.0525 Ha	1147743
Lot 109 Deposited Plan 594022	Fee Simple Title	0.0526 Ha	1147744
Lot 110 Deposited Plan 594022	Fee Simple Title	0.0525 Ha	1147745
Lot 111 Deposited Plan 594022	Fee Simple Title	0.0524 Ha	1147746
Lot 112 Deposited Plan 594022	Fee Simple Title	0.0660 Ha	1147747
Lot 113 Deposited Plan 594022	Fee Simple Title	0.0706 Ha	1147748
Lot 114 Deposited Plan 594022	Fee Simple Title	0.0541 Ha	1147749

# Title Plan - LT 594022

---

## Created Parcels

Parcels	Parcel Intent	Area	RT Reference
Lot 115 Deposited Plan 594022	Fee Simple Title	0.0542 Ha	1147750
Lot 116 Deposited Plan 594022	Fee Simple Title	0.0542 Ha	1147751
Lot 117 Deposited Plan 594022	Fee Simple Title	0.0542 Ha	1147752
Lot 118 Deposited Plan 594022	Fee Simple Title	0.0541 Ha	1147753
Lot 119 Deposited Plan 594022	Fee Simple Title	0.0541 Ha	1147754
Lot 120 Deposited Plan 594022	Fee Simple Title	0.0542 Ha	1147755
Lot 121 Deposited Plan 594022	Fee Simple Title	0.0543 Ha	1147756
Lot 122 Deposited Plan 594022	Fee Simple Title	0.0541 Ha	1147757
Lot 123 Deposited Plan 594022	Fee Simple Title	0.0663 Ha	1147758
Lot 72 Deposited Plan 594022	Fee Simple Title	0.0540 Ha	1147724
Lot 73 Deposited Plan 594022	Fee Simple Title	0.0540 Ha	1147725
Lot 74 Deposited Plan 594022	Fee Simple Title	0.0540 Ha	1147726
Lot 75 Deposited Plan 594022	Fee Simple Title	0.0542 Ha	1147727
Area A Deposited Plan 594022	Easement		
Area B Deposited Plan 594022	Easement		
Area C Deposited Plan 594022	Easement		
Area D Deposited Plan 594022	Easement		
Area E Deposited Plan 594022	Easement		
Area F Deposited Plan 594022	Easement		
Area G Deposited Plan 594022	Easement		
Area H Deposited Plan 594022	Easement		
Area I Deposited Plan 594022	Easement		
Area AA Deposited Plan 594022	Covenant - Land		
Area AB Deposited Plan 594022	Covenant - Land		
Area AC Deposited Plan 594022	Covenant - Land		
Area AD Deposited Plan 594022	Covenant - Land		
Area AE Deposited Plan 594022	Covenant - Land		
Area AF Deposited Plan 594022	Covenant - Land		
Area AG Deposited Plan 594022	Covenant - Land		
Area AH Deposited Plan 594022	Covenant - Land		
Area AI Deposited Plan 594022	Covenant - Land		
Area AJ Deposited Plan 594022	Covenant - Land		
Area AK Deposited Plan 594022	Covenant - Land		
Area AL Deposited Plan 594022	Covenant - Land		
Area AM Deposited Plan 594022	Covenant - Land		
Area AN Deposited Plan 594022	Covenant - Land		
Area AO Deposited Plan 594022	Covenant - Land		
Area AP Deposited Plan 594022	Covenant - Land		
Area AQ Deposited Plan 594022	Covenant - Land		
Area AR Deposited Plan 594022	Covenant - Land		
Area AS Deposited Plan 594022	Covenant - Land		
Area AT Deposited Plan 594022	Covenant - Land		
Area AU Deposited Plan 594022	Covenant - Land		
Area AV Deposited Plan 594022	Covenant - Land		

# Title Plan - LT 594022

---

## Created Parcels

Parcels	Parcel Intent	Area	RT Reference
Area AW Deposited Plan 594022	Covenant - Land		
Area AX Deposited Plan 594022	Covenant - Land		
Area AY Deposited Plan 594022	Covenant - Land		
Area AZ Deposited Plan 594022	Covenant - Land		
Area DA Deposited Plan 594022	Covenant - Land		
Area DB Deposited Plan 594022	Covenant - Land		
Area DC Deposited Plan 594022	Covenant - Land		
Area DD Deposited Plan 594022	Covenant - Land		
Area DE Deposited Plan 594022	Covenant - Land		
Area BA Deposited Plan 594022	Covenant - Land		
Area BB Deposited Plan 594022	Covenant - Land		
Area BC Deposited Plan 594022	Covenant - Land		
Area BD Deposited Plan 594022	Covenant - Land		
Area BE Deposited Plan 594022	Covenant - Land		
Area BF Deposited Plan 594022	Covenant - Land		
Area BG Deposited Plan 594022	Covenant - Land		
Area BH Deposited Plan 594022	Covenant - Land		
Area BI Deposited Plan 594022	Covenant - Land		
Area BJ Deposited Plan 594022	Covenant - Land		
Area BK Deposited Plan 594022	Covenant - Land		
Area BL Deposited Plan 594022	Covenant - Land		
Area BM Deposited Plan 594022	Covenant - Land		
Area BN Deposited Plan 594022	Covenant - Land		
Area BO Deposited Plan 594022	Covenant - Land		
Area BP Deposited Plan 594022	Covenant - Land		
Area BQ Deposited Plan 594022	Covenant - Land		
Area BR Deposited Plan 594022	Covenant - Land		
Area BS Deposited Plan 594022	Covenant - Land		
Area BT Deposited Plan 594022	Covenant - Land		
Area BU Deposited Plan 594022	Covenant - Land		
Area BV Deposited Plan 594022	Covenant - Land		
Area BW Deposited Plan 594022	Covenant - Land		
Area BX Deposited Plan 594022	Covenant - Land		
Area BY Deposited Plan 594022	Covenant - Land		
Area BZ Deposited Plan 594022	Covenant - Land		
Area EA Deposited Plan 594022	Covenant - Land		
Area EB Deposited Plan 594022	Covenant - Land		
Area EC Deposited Plan 594022	Covenant - Land		
Area ED Deposited Plan 594022	Covenant - Land		
Area EE Deposited Plan 594022	Covenant - Land		
Area EF Deposited Plan 594022	Covenant - Land		
Area EG Deposited Plan 594022	Covenant - Land		
Area EH Deposited Plan 594022	Covenant - Land		
Area EI Deposited Plan 594022	Covenant - Land		



# Title Plan - LT 594022

---

## Created Parcels

Parcels	Parcel Intent	Area	RT Reference
Area CA Deposited Plan 594022	Covenant - Land		
Area CB Deposited Plan 594022	Covenant - Land		
Lot 9000 Deposited Plan 594022	Fee Simple Title	6.9095 Ha	1147759
<b>Total Area</b>		<u>9.7094 Ha</u>	

**LT 594022 Schedule/Memorandum**

Land registration district  
North Auckland

Territorial authority  
Auckland Council

**Schedule of Easements**

Parcels shown with a prefix of *HL*- include height-limited boundaries

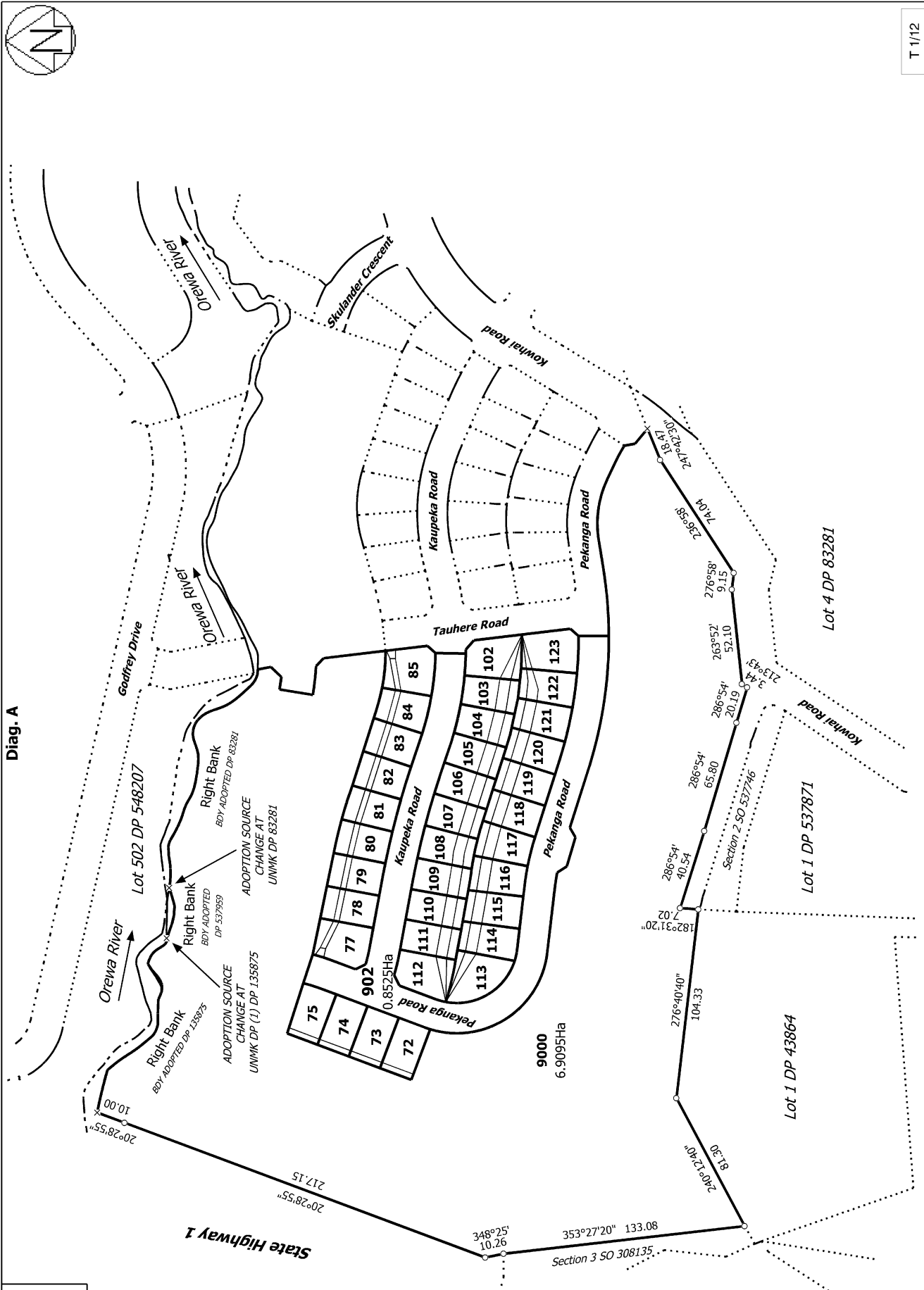
PURPOSE	SHOWN	BURDENED LAND	BENEFITED LAND
Right to Maintain Garden	A	Lot 77	Lot 9000
" "	B	Lot 78	Lot 9000
" "	C	Lot 79	Lot 9000
" "	D	Lot 80	Lot 9000
" "	E	Lot 81	Lot 9000
" "	F	Lot 82	Lot 9000
" "	G	Lot 83	Lot 9000
" "	H	Lot 84	Lot 9000
" "	I	Lot 85	Lot 9000

**Notes**

Areas AA-AZ, BA-BZ, CA-CB, DA-DE, and EA-EI are subject to geotechnical land covenants.

Subject To Part IVA  
 Conservation Act 1987  
 (affects land formerly  
 Lots 1 and 2 DP 197353)

Diag. A



T 1/12

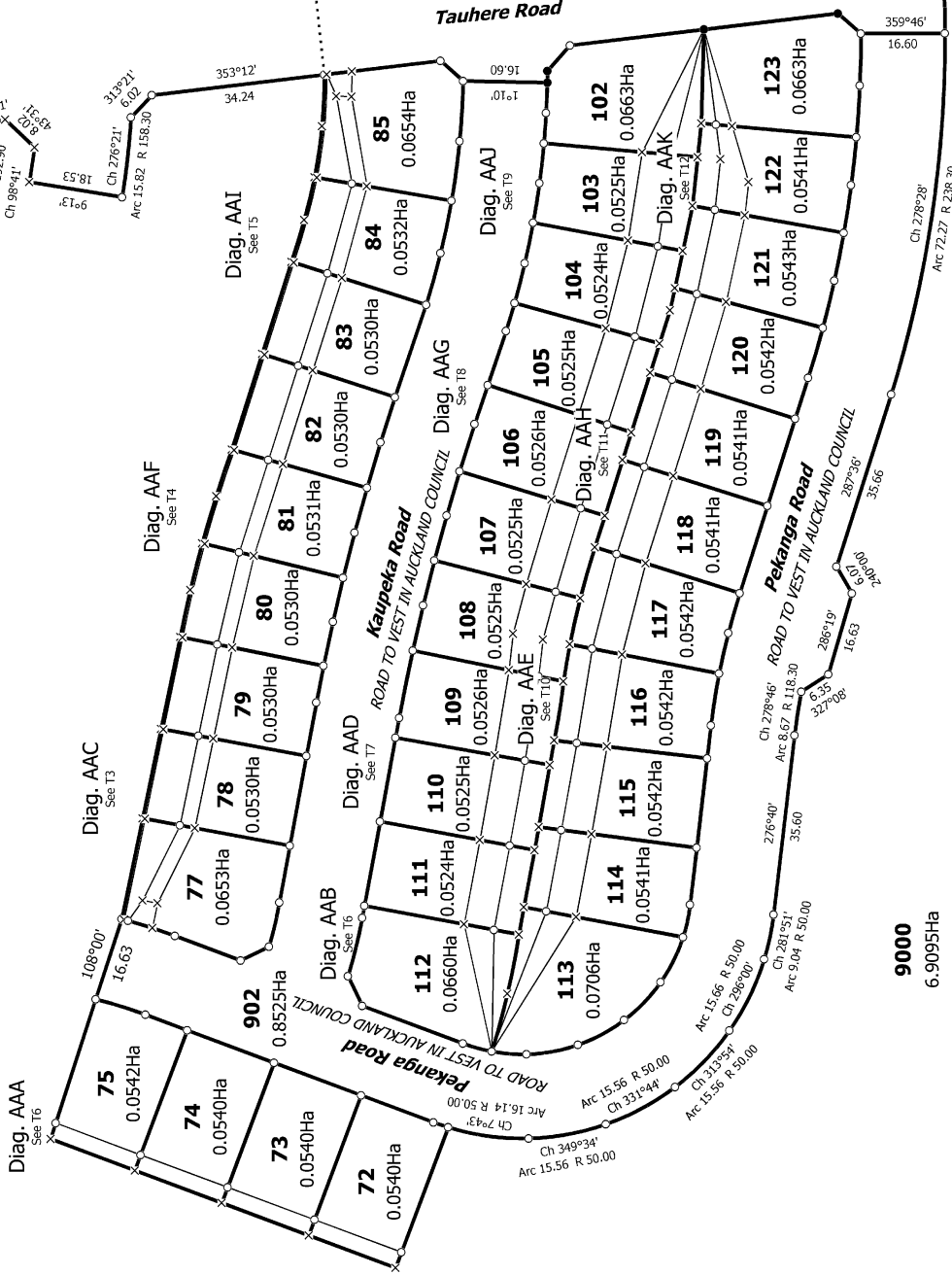
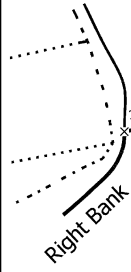
Lots 72 to 75, 77 to 85, 102 to 123, 902 and 9000 Being a Subdivision of Lot  
 9000 DP 580129

Surveyor: Samantha Kate Muirhead  
 Firm: Wood & Partners Consultants Ltd

Title Plan  
 LT 594022  
 DRAFT



Diag. AA



9000  
6.9095Ha

Subject To Part IVA  
Conservation Act 1987  
(affects land formerly  
Lots 1 and 2 DP 197353)

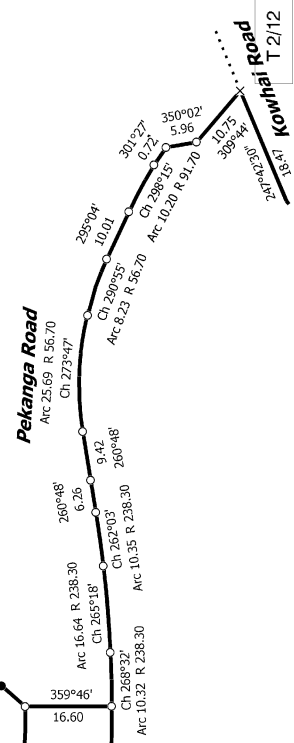
Land District: North Auckland

Digitally Generated Plan  
Generated on: 22/09/2023 4:22pm Page 7 of 17

Lots 72 to 75, 77 to 85, 102 to 123, 902 and 9000 Being a Subdivision of Lot  
9000 DP 580129

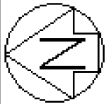
Surveyor: Samantha Kate Muirhead  
Firm: Wood & Partners Consultants Ltd

Title Plan  
LT 594022  
DRAFT

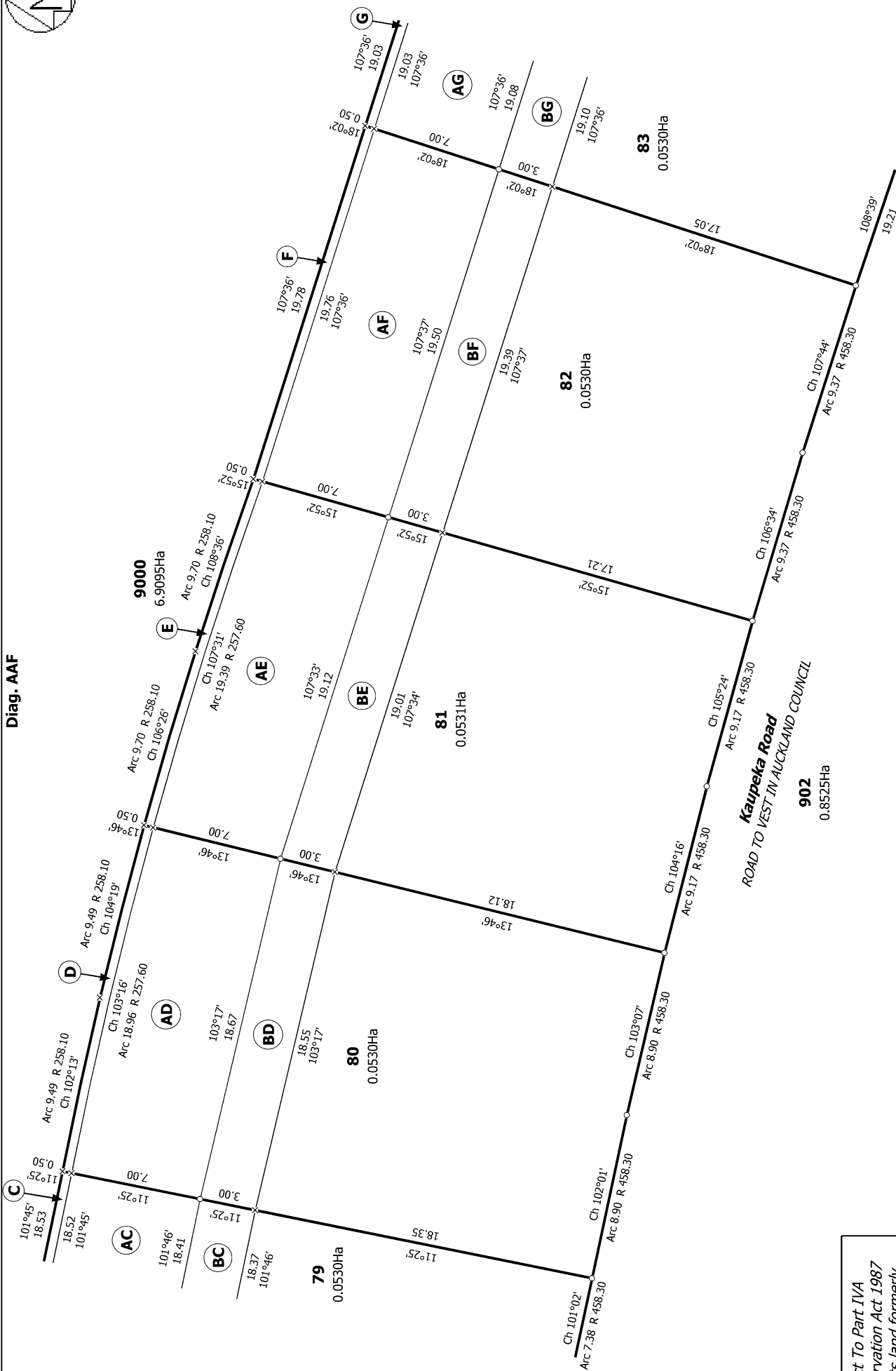








Diag. AAF



T 4/12

Subject To Part IVA  
 Conservation Act 1987  
 (affects land formerly  
 Lots 1 and 2 DP 197355)

Land District: North Auckland

Digitally Generated Plan

Generated on: 22/09/2023 4:22pm Page 9 of 17

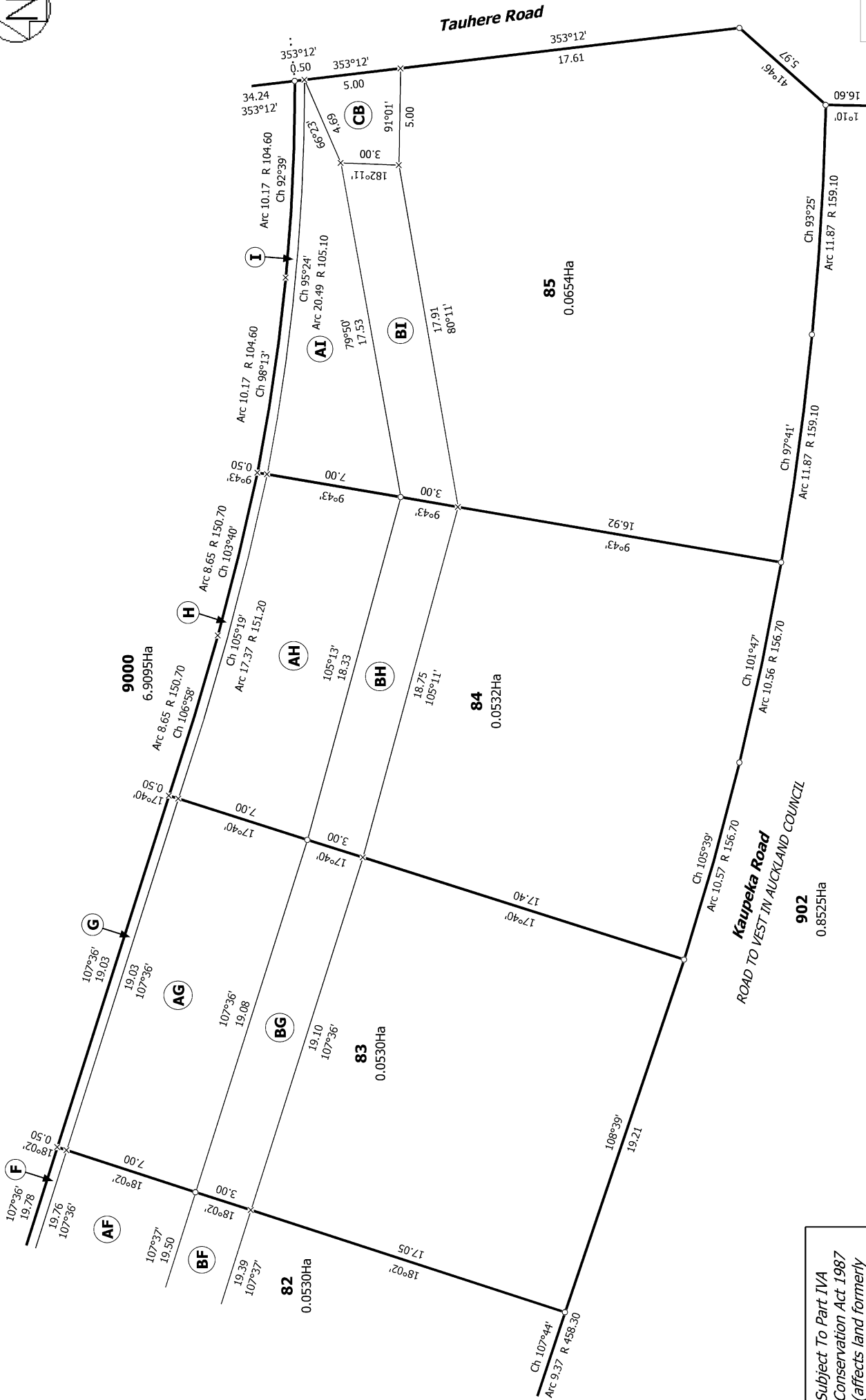
Lots 72 to 75, 77 to 85, 102 to 123, 902 and 9000 Being a Subdivision of Lot  
 9000 DP 580129

Surveyor: Samantha Kate Muirhead  
 Firm: Wood & Partners Consultants Ltd

Title Plan  
 LT 594022  
 DRAFT



Diag. AAI



T 5/12

Subject To Part IVA  
 Conservation Act 1987  
 (affects land formerly  
 Lots 1 and 2 DP 197353)

Land District: North Auckland

Digitally Generated Plan

Generated on: 22/09/2023 4:22pm Page 10 of 17

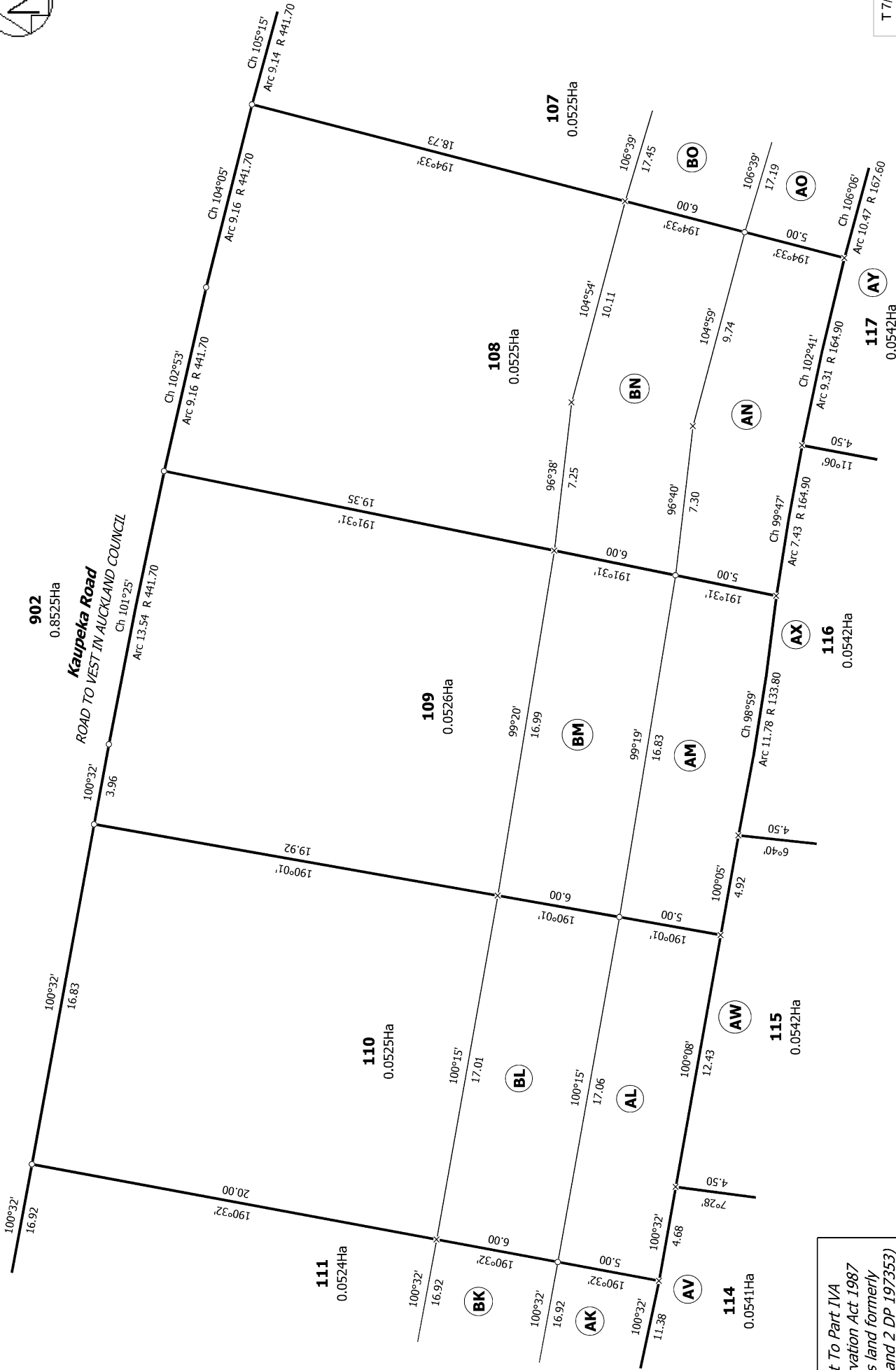
Lots 72 to 75, 77 to 85, 102 to 123, 902 and 9000 Being a Subdivision of Lot  
 9000 DP 580129

Surveyor: Samantha Kate Muirhead  
 Firm: Wood & Partners Consultants Ltd

Title Plan  
 LT 594022  
 DRAFT



Diag. AAD



T 7/12

Subject To Part IVA  
Conservation Act 1987  
(affects land formerly  
Lots 1 and 2 DP 197353)

Land District: North Auckland

Digitally Generated Plan

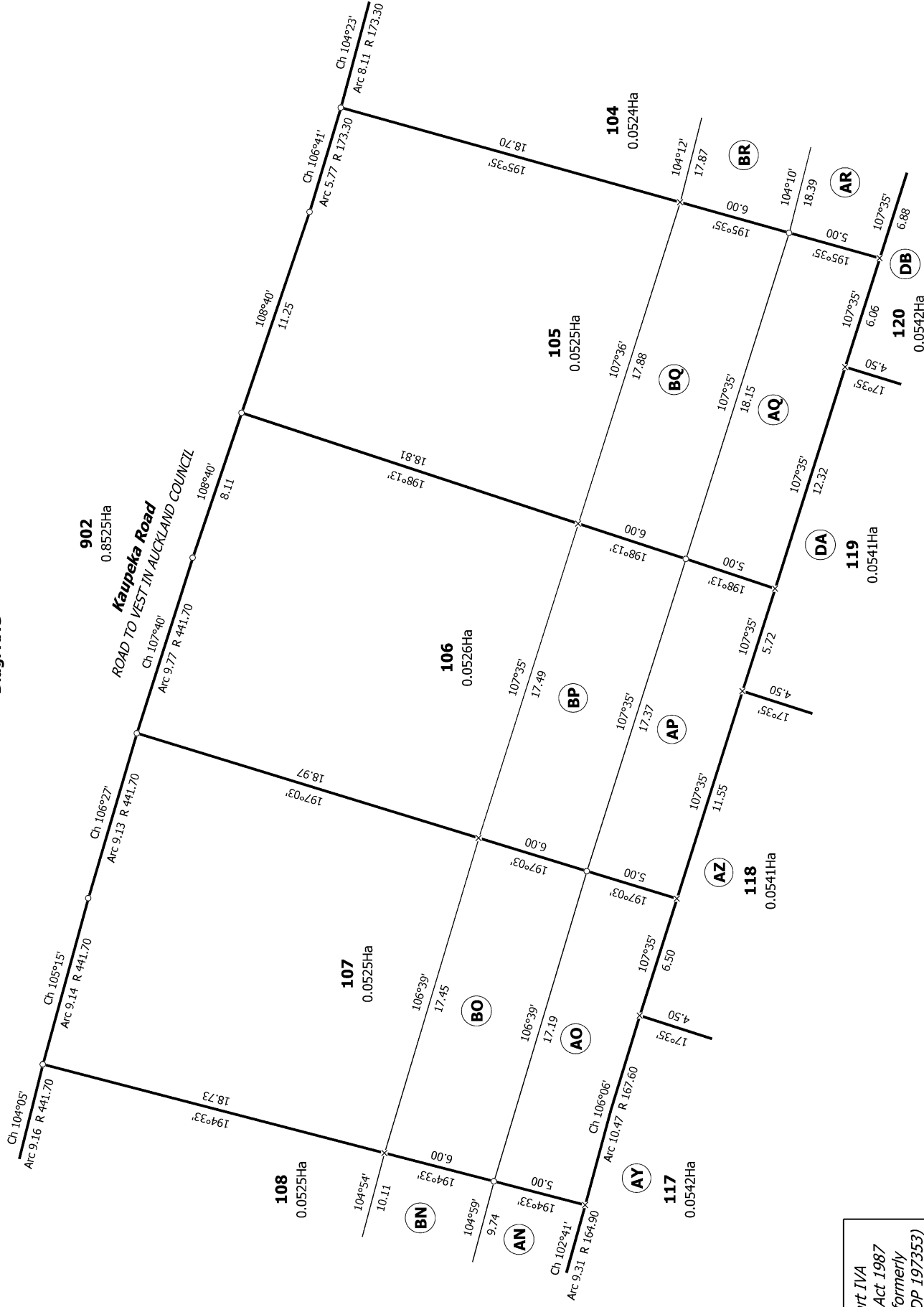
Generated on: 22/09/2023 4:22pm Page 12 of 17

Lots 72 to 75, 77 to 85, 102 to 123, 902 and 9000 Being a Subdivision of Lot  
9000 DP 580129

Surveyor: Samantha Kate Muirhead  
Firm: Wood & Partners Consultants Ltd

Title Plan  
LT 594022  
DRAFT

Diag. AAG



T 8/12

Subject To Part IVA  
 Conservation Act 1987  
 (affects land formerly  
 Lots 1 and 2 DP 197353)

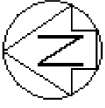
Land District: North Auckland

Digitally Generated Plan  
 Generated on: 22/09/2023 4:22pm Page 13 of 17

Lots 72 to 75, 77 to 85, 102 to 123, 902 and 9000 Being a Subdivision of Lot  
 9000 DP 580129

Surveyor: Samantha Kate Muirhead  
 Firm: Wood & Partners Consultants Ltd

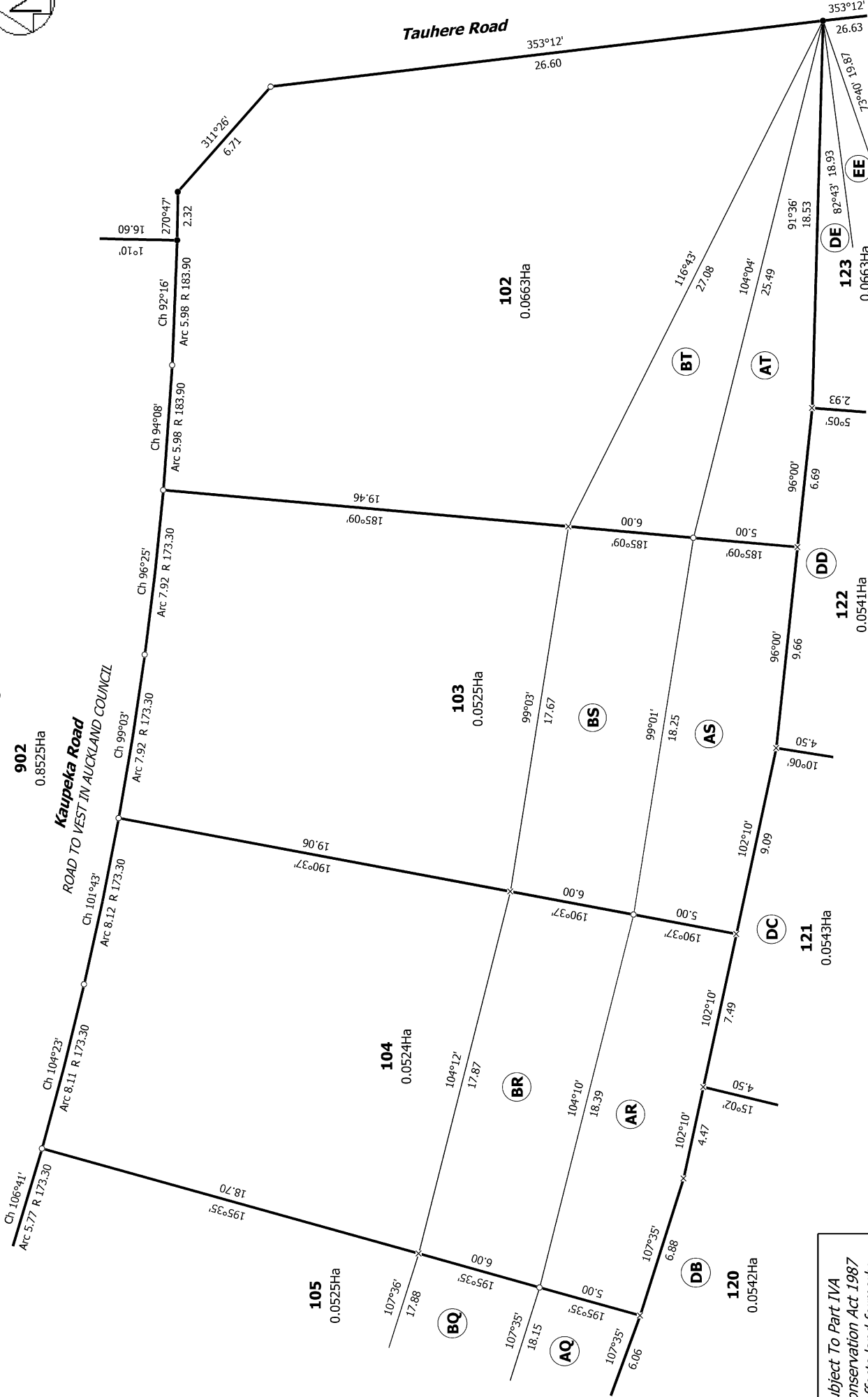
Title Plan  
 LT 594022  
 DRAFT



Diag. AAJ

902  
0.8525Ha

**Kaupeka Road**  
ROAD TO VEST IN AUCKLAND COUNCIL



T 9/12

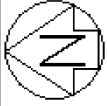
Title Plan  
LT 594022  
DRAFT

Surveyor: Samantha Kate Muirhead  
Firm: Wood & Partners Consultants Ltd

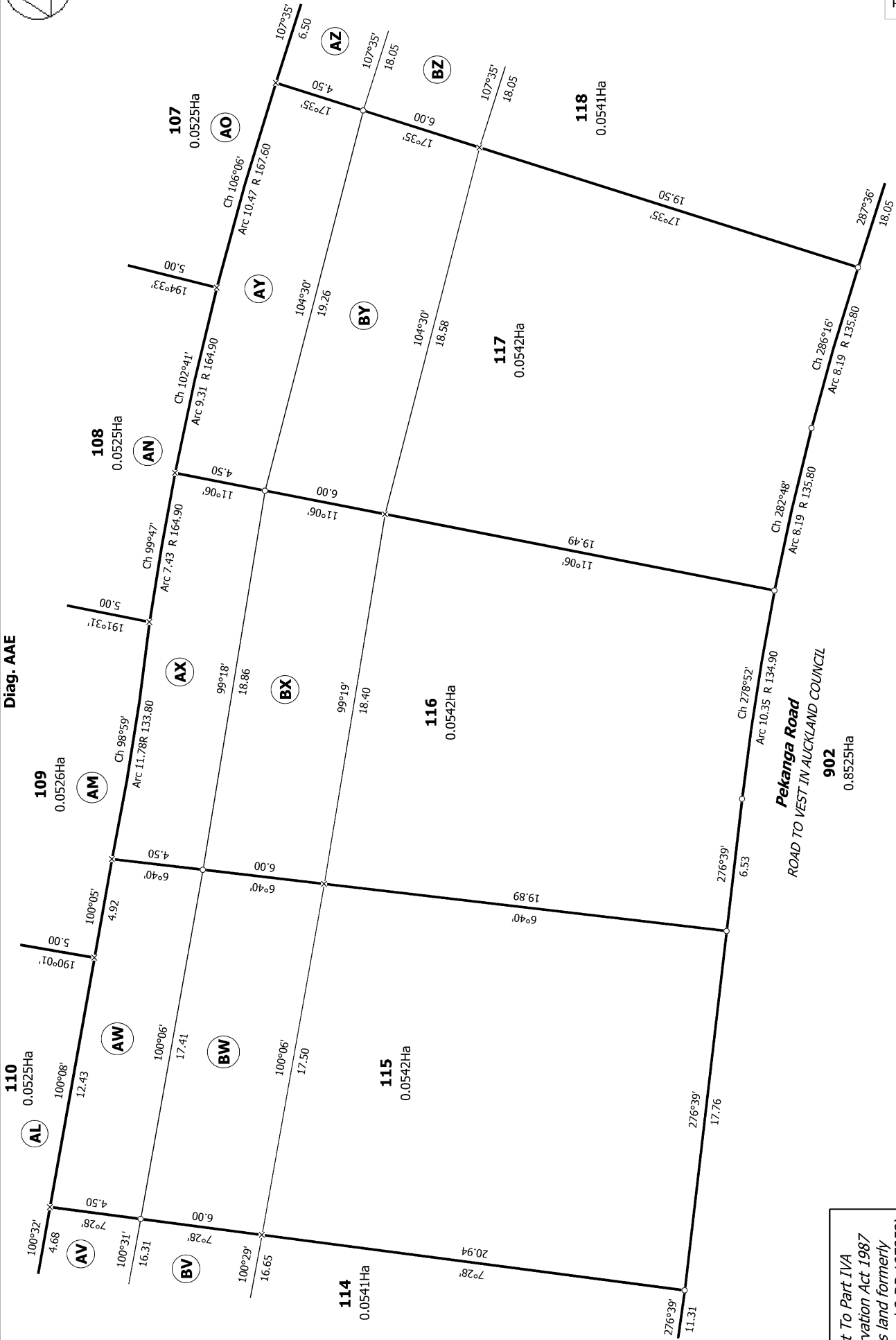
Lots 72 to 75, 77 to 85, 102 to 123, 902 and 9000 Being a Subdivision of Lot  
9000 DP 580129

Land District: North Auckland  
Digitally Generated Plan  
Generated on: 22/09/2023 4:22pm Page 14 of 17

Subject To Part IVA  
Conservation Act 1987  
(affects land formerly  
Lots 1 and 2 DP 197353)



Diag. AAE



T 10/12

Subject To Part IVA  
 Conservation Act 1987  
 (affects land formerly  
 Lots 1 and 2 DP 197353)

Land District: North Auckland

Digitally Generated Plan

Generated on: 22/09/2023 4:22pm Page 15 of 17

Lots 72 to 75, 77 to 85, 102 to 123, 902 and 9000 Being a Subdivision of Lot

9000 DP 580129

Surveyor: Samantha Kate Muirhead

Firm: Wood & Partners Consultants Ltd

Title Plan

LT 594022

DRAFT

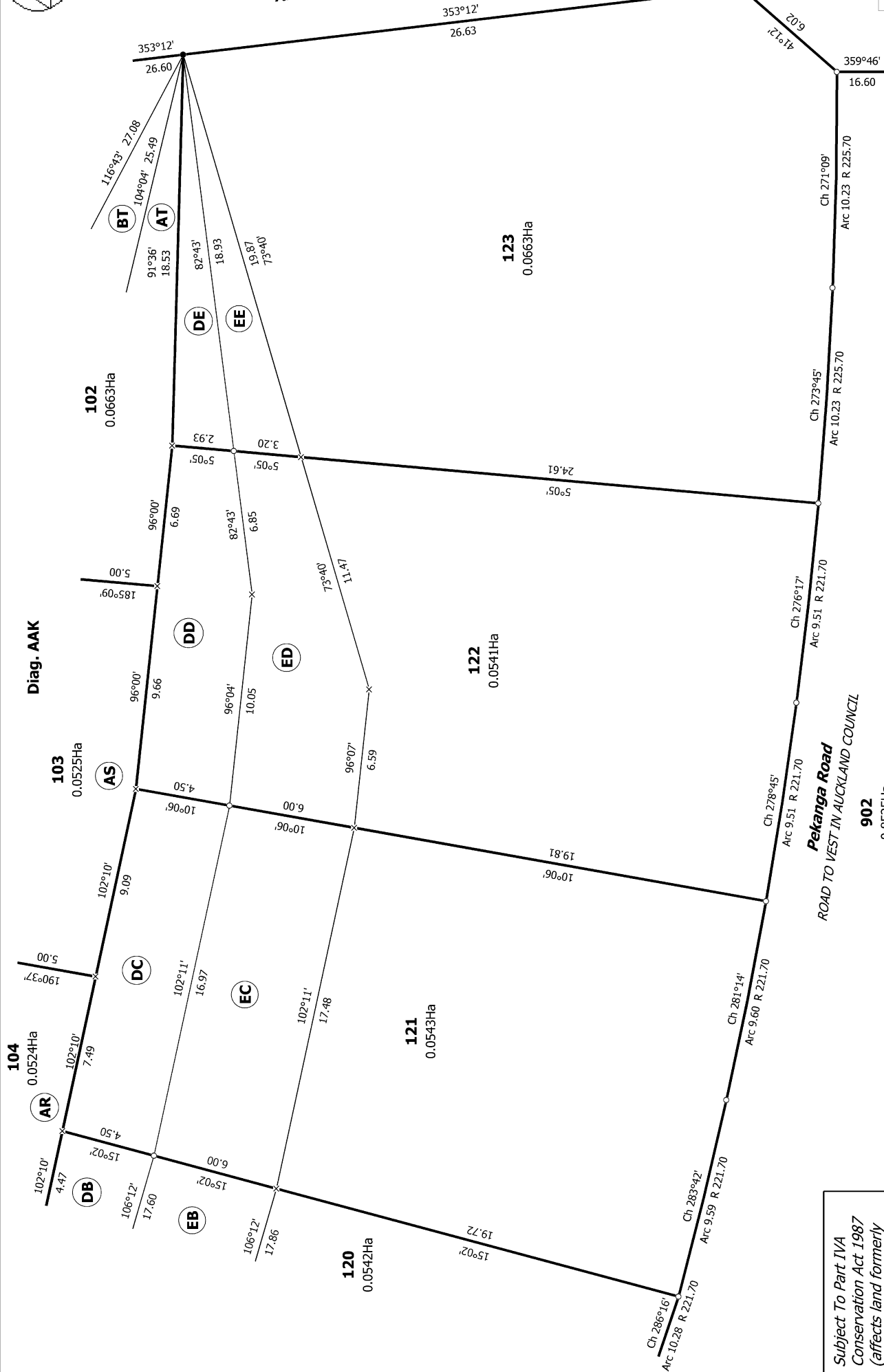






Tauhere Road

T 12/12



Subject To Part IVA  
Conservation Act 1987  
(affects land formerly  
Lots 1 and 2 DP 197353)

Land District: North Auckland  
Digitally Generated Plan  
Generated on: 22/09/2023 4:22pm Page 17 of 17

Lots 72 to 75, 77 to 85, 102 to 123, 902 and 9000 Being a Subdivision of Lot  
9000 DP 580129

Surveyor: Samantha Kate Muirhead  
Firm: Wood & Partners Consultants Ltd

Title Plan  
LT 594022  
DRAFT